



P R O F E S S I O N A L   S E R I E S

RESIDENTIAL FRENCH-DOOR WALL OVEN



AROFG-30

MADE IN USA

# FRENCH DOOR WALL OVEN

## STANDARD FEATURES

### RANGE TOP

- Convection bake, dehydrate and defrost
- Standard bake and broil
- Dependant dual oven doors. The dual dependent doors open 130° with the pull of one door
- Oven Cavity measures 4.8 cu. ft.
- 30,000 BTU hidden bake oven burner
- 15,500 BTU **Inconel**® banquet broiler burner produces 1,800°F broiling temperatures
- Commercial-grade stainless steel construction and insulation
- Commercial-grade high temperature porcelain oven interior with stainless steel gaskets for a durable secure seal
- 2 oven lights
- 2 oven racks with 6 rack positions
- Easy to use analog controls

### MODEL

Gas: AROFG-30

### ELECTRICAL REQUIREMENTS

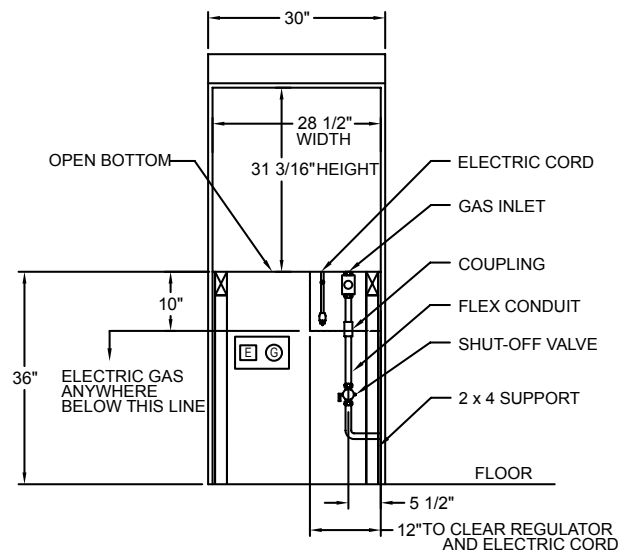
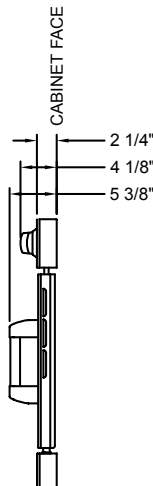
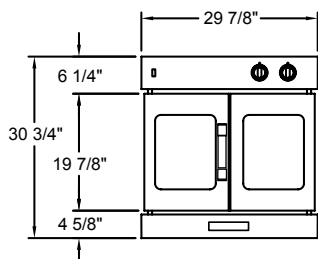
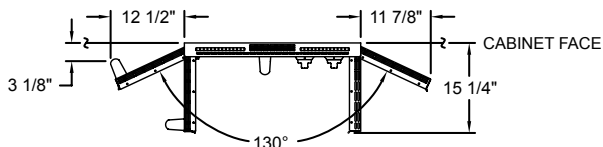
- Model AROFG-30 120 VAC, 9 Amps, Single Phase, 60Hz

### WARRANTY

- One year limited warranty, parts and labor



Top, Front and Side Views.



## INNOVECTION® CONVECTION OVEN TECHNOLOGY

Even, turbulent heat distribution is essential when baking, roasting, and dehydrating food. The American Range **Innovection**® convection oven technology utilizes dual convection motors and louvered side panels to enhance uniform heat distribution throughout the large oven cavity. The strategic placement of the dual **Innovection**® convection motors blended with the louvered side panel design ensures consistent heat distribution; even when challenged with cooking the largest turkey, ham or roast.



## INNOVECTION® CONVECTION OVEN IS GREEN TECHNOLOGY

The highly efficient design of the **Innovection**® Convection Oven utilizes 19% less gas versus a standard sealed convection oven.

## CUSTOMIZE YOUR RANGE

Now you can customize your American Range to match your kitchen settings. Pick from numerous colors and finishes to give your range a unique one-of-a-kind look. For more details, regarding color and finish options go to our website; [www.americanrange.com](http://www.americanrange.com).

## DESIGNER COLORS



## DESIGNER FINISHES

